

# Porthos<sup>™</sup> IoT platform

Our award-winning and industry-leading Porthos<sup>™</sup> Software-as-a-Service platform provides billing, reporting, and support controls over your IoT solutions.

Porthos<sup>™</sup> can be used across multiple carriers simultaneously, allowing our customers to connect to 20 different mobile operator partners around the globe – all on a single screen and a single bill. It is a cloud-based application hosted on our Wyleless private network, ensuring maximum resilience, scalability, and security to millions of devices worldwide.

Whether you are a large multi-national organisation, reseller, SMB, or mobile network operator, Wyleless can create a Porthos<sup>™</sup> solution perfectly tailored to manage and deliver your IoT applications as efficiently as possible.

**At a glance:**

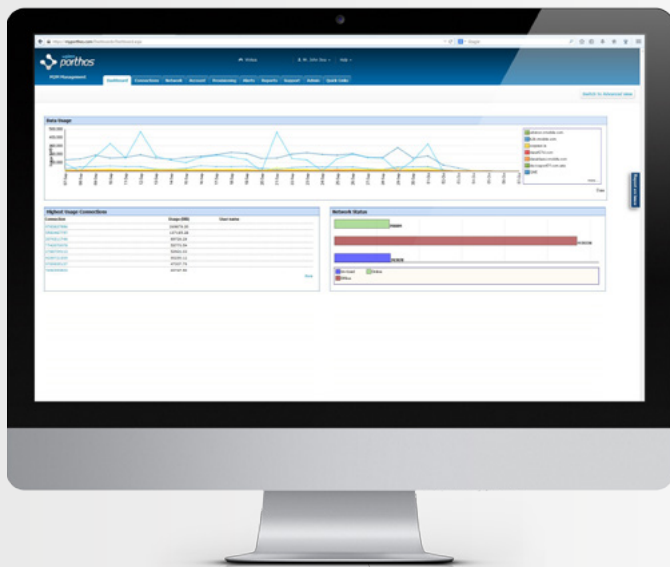
- Carrier Agnostic
- Device Agnostic
- White Label Capability
- Global Reach
- Freedom and Flexibility
- Self Service
- API Integration
- Trusted Advisor
- Private Network

## Key Features

**Carrier Agnostic** – Porthos™ is integrated with over 20 different mobile network operators, which allows our customers to manage all of their connections in one place. Leverage Wyleless’ buying power with any of these carriers and purchase connectivity through us at extremely competitive rates. Wyleless open architecture also enables customers to ‘bring your own carrier’, (BYOC), all managed through Porthos™.

**Device Agnostic** – It doesn’t matter if you have purchased your connected device through Wyleless or if you want to bring your own device (BYOD), Porthos™ will still provide the powerful tools you need to effectively manage your equipment. In addition, Wyleless can offer an e-commerce solution including forward and reverse logistics for consumption by your company, or your end-user.

**White Label Capability** – Porthos™ can be completely white labelled, allowing MNO’s, resellers, and Application Service Providers to offer it as a value-added service. As a role-driven program, Porthos™ offers a multi-tiered experience which gives administrators the power to grant or restrict user permissions to perform particular functions.



**Global Reach** – Wyleless has Virtual Data Centers (VDCs) around the world enabling us to scale our platform and embrace the growth of IoT. We can implement a ‘dedicated instance’ to help mitigate risk and satisfy regulatory and security requirements whilst providing near-premises access for our customers.

**Freedom and Flexibility** – Our customers have the ability to customize our IoT Platform. Take advantage of our multi-lingual offering, use custom fields to identify and group connections, or configure your reports to display exactly the information you need. Take advantage of our flexible billing system as well, which provides greater transparency and control for you and your customers by combining all of your connections onto one single bill.

**Self Service** – Save time and money with Porthos™’ provisioning features that allow users to order new SIMs, activate connections, as well as suspend and restore existing connections without ever picking up the phone. You can also create support tickets via Porthos™, which will go directly through to our 3 tiers of global, multi-lingual support teams – available 24/7/365.

**API Integration** – The Wyleless API allows you to embed useful data directly into your application and extend these features to your customers or internal teams. With industry standard protocols, the API is easy to integrate into almost any platform or system with no dependency on developer tools or specialised data transfer. Write once to a single API for all carriers.

**Trusted Advisor** – Be sure to leverage Wyleless’ expertise as the leading IoT solutions provider. Wyleless will engage with your company regarding your strategic needs and share decades worth of M2M and IoT experience.

**Private Network** – Security is not an issue with Porthos™, as it is hosted on Wyleless’ geo-redundant private data network. This allows us to customize VPN tunnels with operators, IPSEC tunnels with devices, and faster-than-direct response times for custom carrier solutions.

### About Wyleless

We empower businesses to realise the full potential of the Internet of Things (IoT). Our unparalleled reach is delivered through our 20+ MNO partners across the globe. We connect millions of devices around the world with our leading technology, providing guaranteed costs, visibility and control of customer mission critical applications. We offer eSim, Multi-IMSI, and Core Multiple Network capabilities deployed through Virtual Data Centres in several countries and our impartial experts and collaborative team help our customers succeed in their businesses. Our comprehensive services deliver 24/7/365 support and monitoring of customer devices through our global service centres.

North America – Tel +1 617 949 8900

Europe – Tel +31 88 746 4626

UK – Tel +44 1895 454 660

Latin America – Tel +55 11 2122 0235

Marketing@wyleless.com

www.wyleless.com